



Thank you for downloading a chapter from the “*2016 Billion-Ton Report: Advancing Domestic Resources for a Thriving Bioeconomy, Volume 2: Environmental Sustainability Effects of Select Scenarios from Volume 1*”.

Please cite as follows:

U.S. Department of Energy. 2017. *2016 Billion-Ton Report: Advancing Domestic Resources for a Thriving Bioeconomy, Volume 2: Environmental Sustainability Effects of Select Scenarios from Volume 1*. R.A. Efroymsen, M.H. Langholtz, K.E. Johnson, and B.J. Stokes (Leads), ORNL/TM-2016/727. Oak Ridge National Laboratory, Oak Ridge, TN. 642p. doi: 10.2172/1338837.

This report, as well as supporting documentation, data, and analysis tools, can be found on the Bioenergy Knowledge Discovery Framework at bioenergykdf.net.

Go to <https://bioenergykdf.net/billionton2016/vol2reportinfo> for the latest report information and metadata for volume 2 or <https://bioenergykdf.net/billionton2016/reportinfo> for the same for volume 1.

Following is select front matter from the report and the selected chapter.

2016 BILLION-TON REPORT

Advancing Domestic Resources for a Thriving Bioeconomy

A Study Sponsored by U.S. Department of Energy
Office of Energy Efficiency and Renewable Energy
Bioenergy Technologies Office

Volume 2:

Environmental Sustainability Effects of Select Scenarios from Volume 1

January 2017

Prepared by

OAK RIDGE NATIONAL LABORATORY
Oak Ridge, Tennessee 37831–6335 managed by
UT-Battelle, LLC
for the
U.S. DEPARTMENT OF ENERGY

Citation :

U.S. Department of Energy. 2017. *2016 Billion-Ton Report: Advancing Domestic Resources for a Thriving Bioeconomy, Volume 2: Environmental Sustainability Effects of Select Scenarios from Volume 1*. R. A. Efroymson, M. H. Langholtz, K.E. Johnson, and B. J. Stokes (Eds.), ORNL/TM-2016/727. Oak Ridge National Laboratory, Oak Ridge, TN. 640p. doi 10.2172/1338837

This report was prepared as an account of work sponsored by an agency of the United States Government. Neither the United States Government nor any agency thereof, nor any of their employees, makes any warranty, expressed or implied, or assumes any legal liability or responsibility for the accuracy, completeness, or usefulness of any information, apparatus, product, or process disclosed, or represents that its use would not infringe privately owned rights. Reference herein to any specific commercial product, process, or service by trade name, trademark, manufacturer, or otherwise, does not necessarily constitute or imply its endorsement, recommendation, or favoring by the United States Government or any agency thereof. The views and opinions of authors expressed herein do not necessarily state or reflect those of the United States Government or any agency thereof. This report is being disseminated by the Department of Energy. As such, the document was prepared in compliance with Section 515 of the Treasury and General Government Appropriations Act for Fiscal Year 2001 (Public Law 106-554) and information quality guidelines issued by the Department of Energy. Further, this report could be “influential scientific information” as that term is defined in the Office of Management and Budget’s Information Quality Bulletin for Peer Review (Bulletin). This report has been peer reviewed pursuant to section II of the Bulletin.

Availability

This report, as well as supporting documentation, data, and analysis tools, can be found on the Bioenergy Knowledge Discovery Framework at bioenergykdf.net. Go to <https://bioenergykdf.net/billionton2016/vol2reportinfo> for the latest report information and metadata.

Additional Information

The U.S. Department of Energy, Office of Energy Efficiency and Renewable Energy's Bioenergy Technologies Office and Oak Ridge National Laboratory provide access to information and publications on biomass availability and other topics. The following websites are available:

energy.gov

eere.energy.gov

bioenergy.energy.gov

web.ornl.gov/sci/transportation/research/bioenergy/

Front cover images courtesy of ATP³, Oak Ridge National Laboratory, Abengoa, Solazyme, and BCS, Incorporated.

DISCLAIMER

The authors have made every attempt to use the best information and data available, to provide transparency in the analysis, and to have experts provide input and review. However, the *2016 Billion-Ton Report* is a strategic assessment of potential biomass (volume 1) and a modeled assessment of potential environmental effects (volume 2). It alone is not sufficiently designed, developed, and validated to be a tactical planning and decision tool, and it should not be the sole source of information for supporting business decisions. *BT16* volume 2 is not a prediction of environmental effects of growing the bioeconomy, but rather, it evaluates specifically defined biomass-production scenarios to help researchers, industry, and other decision makers identify possible benefits, challenges, and research needs related to increasing biomass production. Users should refer to the chapters and associated information on the Bioenergy Knowledge Discovery Framework (bioenergykdf.net/billionton) to understand the assumptions and uncertainties of the analyses presented. The use of tradenames and brands are for reader convenience and are not an endorsement by the U.S. Department of Energy, Oak Ridge National Laboratory, or other contributors.

The foundation of the agricultural sector analysis is the USDA Agricultural Projections to 2024. From the report--“Projections cover agricultural commodities, agricultural trade, and aggregate indicators of the sector, such as farm income. The projections are based on specific assumptions about macroeconomic conditions, policy, weather, and international developments, with no domestic or external shocks to global agricultural markets.” The *2016 Billion-Ton Report* agricultural simulations of energy crops and primary crop residues are introduced in alternative scenarios to the 2015 USDA Long Term Forecast. Only 2015-2024 Billion-Ton national level baseline scenario results of crop supply, price, and planted and harvested acres for eight major crops are considered to be consistent with the 2015 USDA Long Term Forecast. Projections for 2025–2040 in the *2016 Billion-Ton Report* baseline scenario and the resulting regional and county level data were generated through application of separate data, analysis, and technical assumptions led by Oak Ridge National Laboratory and do not represent nor imply U.S. Department of Agriculture or U.S. Department of Energy quantitative forecasts or policy. The forest scenarios were adapted from U.S. Forest Service models and developed explicitly for this report and do not reflect, imply, or represent U.S. Forest Service policy or findings. The Federal Government prohibits discrimination in all its programs and activities on the basis of race, color, national origin, age, disability, and, where applicable, sex, marital status, familial status, parental status, religion, sexual orientation, genetic information, political beliefs, reprisal, or because all or part of an individual's income is derived from any public assistance program.



10

Simulated Response of Avian Biodiversity to Biomass Production

Henriette Jager,¹ Gangsheng Wang,¹
Jasmine Kreig,¹ Nathan Sutton,¹ and Ingrid Busch¹

¹ Oak Ridge National Laboratory

10.1 Introduction

Compared with other environmental indicators, few U.S. studies have quantified the relationships between production of biomass crops and biodiversity. The two are linked by both direct and indirect causal pathways. Indirectly, a growing bioenergy industry can delay or prevent bioclimatic stress (Cook, Beyea, and Keeler 1991a, b) to wildlife by replacing fossil energy and slowing the rate of climate warming (Dale, Parish, and Kline 2015). This is particularly true for ectotherms, including fish and other aquatic biota (Fenoglio et al. 2010). However, most public concerns center on direct linkages—specifically, how changes in land management to grow biomass will influence biodiversity. Here, we address this question, with a focus on birds that can be expanded to include other taxa in future assessments.

Public concern regarding biomass and its impact on biodiversity has been greatest in the Midwest, where 70% of diverse prairie and wetland ecosystems have been replaced by less-diverse agricultural landscapes (Samson, Knopf, and Ostlie 2004). This negative response in diversity to past changes in land management has taught us that replacing low-intensity, high-diversity land management with high-intensity, low-diversity land management is often accompanied by a reduction in species diversity (Meehan, Hurlbert, and Gratton 2010) and adds to public concern about increasing the agricultural footprint by adding biomass feedstock production. The expansion of corn grown for ethanol has also been raised as a concern for biodiversity (Brooke et al. 2009, Rashford, Walker, and Bastian 2011). However, biomass production can involve wildlife-friendly crops that mimic local native habitat (grasses and short-rotation woody crops [SRWCs]), crops that provide food (e.g., oil-seed crops for biodiesel), and more-intensive use (residue harvest) of existing croplands without expanding into less-managed land.

The analysis presented in this chapter builds on previous research. Many national-scale studies have quantified future changes in wildlife habitat, for example, in response to changes in land cover (Tavernia et al. 2013, Lawler et al. 2014) or climate change [e.g., (Matthews et al. 2011)], but few studies have considered introducing biomass feedstocks into future landscapes. In addition, many large-scale conservation-planning studies that assess the impacts of land-use change assume that all change is bad (Ando 1998, Withey et al. 2012). We relaxed this assumption by explicitly accounting for the value of biomass crops as wildlife habitat. Our approach was inspired, in part, by two earlier studies at the University of California, Berkeley. Both employed spatial optimization to determine the best places to grow bioenergy crops for wildlife and for farmer profit. In a national-scale modeling study, the number of species of concern potentially impacted by replacing pasture with perennial grasses did not increase with increased farmer profit (Evans, Kelley, and Potts 2015). However, a trade-off between biodiversity and farmer profit was evident when biomass was simulated on lands enrolled in the U.S. Department of Agriculture (USDA) Conservation Reserve Program (CRP lands) (Evans, Kelley, and Potts 2015). This study included 322 at-risk vertebrate species known to occupy cropland or grassland habitat. Evans, Kelley, and Potts estimated that 57 avian species might be influenced by conversion of cropland or pasture under a low-demand scenario (7.6 billion liters of fuel) and 119 species might be influenced under a high-demand (22.7 billion liters) scenario. They estimated that 44 avian species might be influenced by conversion of CRP land under a low-demand scenario (7.6 billion liters of fuel) and 85 species might be influenced under a high-demand (22.7 billion liters) scenario. Stoms et al. (2012) allocated biomass crops to lands across the State of California to maximize wildlife habitat and minimize land rents. Feedstocks included irrigated row crops (sugar beets); dryland grain crops (wheat, barley); irrigated grain crops (corn, sorghum, safflower, canola, and camelina); and

irrigated perennial grasses. Perennial grasses supported the largest number of wildlife species, followed by irrigated grain crops, dryland grain crops, and sugar beets.

The analysis presented here incorporates information from local field-scale studies into a national-scale assessment of a potential future informed by spatially extensive biodiversity and bioclimatic data. The analysis is based on the BC1 2040 biomass supply scenario, which is described in *BT16* volume 1.

10.2 Scope of Assessment

We developed a modeling framework, Bio-EST (Bioenergy-biodiversity Estimation), to assess the change in species richness (a measure of biodiversity) associated with change in land management to grow biomass crops. This change was evaluated by comparing modeled responses of avian communities to two national-scale landscapes, a recent 2014 Cropland Data Layer (CDL-2014) and a future BC1 2040 landscape. The BC1 2040 scenario assumed a \$60/dry ton farmgate price for cellulosic feedstocks and 1%/year yield increases (see BC1 2040 scenario in section 10.3.1).

Bio-EST considers effects on birds from changes associated with growing dedicated energy crops, including perennial grasses, annual crops such as sorghum, and SRWCs. Management assumptions are those of the primary studies used as the bases for analysis, as cited in the methods. For one crop (switchgrass), we compare strip and total harvest, but the effects of residue removal from agricultural lands are not considered in this chapter. The effects of forest residue harvesting (as well as harvesting of other types of forest biomass) on selected forest wildlife species is evaluated in chapter 11.

One challenge faced here was to conduct a national-scale assessment of wildlife response based on field studies that measure the avian habitat value of lands growing biomass feedstocks. The use of species

distribution models at the resolution of farmer-owned fields over a national extent made it possible to estimate the distributions of a species of interest at a finer spatial resolution than is typically available with range maps or atlas data (Rondinini et al. 2006).

We focused on birds for several reasons. (1) Birds respond directly to changing vegetation composition and structure at scales relevant to management. Consequently, bird responses to bioenergy croplands have been relatively well studied compared to those of other taxa. (2) Conservation-planning studies have highlighted birds as showing strong responses to land-use change compared with other taxa (Lawler et al. 2014). (3) As a group, birds enjoy high public interest. Bird watching at backyard feeders, enjoyment of birds during outdoor activities, and hunting of game birds are common recreational activities. Consequently, the conservation status of avian fauna generally ranks high among public biodiversity concerns (Batt 2009). Earlier in the past century, native prairie was replaced by agricultural land, leading to substantial declines in birds that depend on grasslands and shrub-lands (Askins et al. 2007, Samson, Knopf, and Ostlie 2004).

Our analysis included many species on the 2008 list of Birds of Conservation Concern (U.S. Fish and Wildlife Service 2008). These include highly valued game species, such as the red-necked pheasant (*Phasianus colchicus*); species with special conservation status, such as Henslow's sparrow (*Ammodramus henslowii*), and the upland sandpiper (*Bartramia longicauda*), as well as more common species, such as the American robin (*Turdus migratorius*) and red-winged blackbird (*Agelaius phoeniceus*). In our analysis, we included species with narrow habitat requirements, such as grassland-obligate and forest-obligate birds (habitat specialists). We also include species with more generalized habitat requirements that use edges or open woodland/savannah and species found both in grassland and forest habitats (appendix A, table 1). Species in our list represent different spatial

life histories, including neo-tropical migrants, North American migrants, and year-round resident species (appendix A, table 1) that breed in the eastern United States.

10.3 Methods

Our approach was to estimate and compare avian richness associated with a current year (2014)¹ and a future landscape consistent with the BC1 2040 scenario. Allocation of biomass crops within counties was performed for parcels in the USDA Common Land Unit (CLU) database (USDA 2014), which includes only lands that are associated with USDA farm programs. We refer to this as “downscaling”. CLU shapefiles contain agricultural parcels of varying sizes. CLU parcels are the smallest unit of land with common land cover, land management. Each parcel is delineated by a boundary, such as a fence line, road, or waterway. Biomass was not allocated to the remaining lands (i.e., those that are not in the

CLU database because they are not in private ownership). The assumption is that public lands will be ineligible to transition to growing dedicated energy crops. Landscapes used in our analyses were classified into the following land use/land cover (LULC) categories (table 10.1).

We projected occupancy for bird species in a future landscape consistent with the BC1 2040 scenario that includes SRWCs, perennial grasses, and sorghum and energy cane. Species distribution models (SDMs) were developed at a resolution of a 1-km raster with assigned LULC classes from table 10.1. SDMs provide local estimates of the probability of occupancy by a species within 1-km raster pixels for the conterminous United States. If a threshold is specified (e.g., a species is considered present if probability is >0.5), probability maps can be converted into species range maps.

Another potentially important local consideration is that wildlife species that are habitat specialists, such as grassland and forest birds, tend to require a

Table 10.1 | LULC Categories, Including Commodity Crops, Matrix Lands, and Dedicated Bioenergy Crops

Conventional Crops in Cropland Data Layer	Dedicated Bioenergy Crops not in the Cropland Data Layer	National Land Cover Data Categories in Cropland Data Layer
Barley	Switchgrass	Evergreen forest
Corn	<i>Miscanthus</i>	Mixed forest
Cotton	Energy cane	Hardwood forest
Hay	Pine	Other (water, urban)
Idle	Poplar	
Oats	Willow	
Pasture/grassland	<i>Eucalyptus</i>	
Rice		
Sorghum		
Soybeans		
Wheat		

¹ This analysis used the CDL as a baseline instead of the BC1 2017 scenario that was used elsewhere in this report.

minimum habitat area to persist. For example, Blank et al. (2014) found that grassland bird densities were positively associated with surrounding grassland area. To account for this, we developed a method for quantifying wildlife habitat in current and hypothetical future landscapes; these landscapes did not count small areas that failed to exceed species-specific minimum habitat requirements as suitable because of their size.

10.3.1 BT16 LULC Allocation

“Current” 2014 landscape: We began by assigning an initial LULC class to each CLU parcel, p , as the CDL-2014 class having the largest area within the parcel. For very small parcels, the LULC at the centroid was used.

Future BC1 2040 landscape: We downscaled future LULC categories from county-level Policy Analysis System (POLYSYS) results to USDA CLU parcels. We formulated a mixed-integer optimization to allocate the production of biomass crops to parcels within each county. The problem involved a $p \times k$ matrix of spatial decision variables, X , that determined how LULC class k is allocated to parcel p within each county. Each parcel was assigned one crop (i.e., allocation of LULC classes, X_p in parcel p was constrained to be binary, [equation 10.1]). For each county, we minimized the difference between the total area converted from LULC class j to k and the total area specified by the BT16 scenario for the county (equation 10.1).

Equation 10.1:

Let

$t_{k' \rightarrow k} \equiv$ probability of transition from class k' to k

$x_{pk} \equiv \begin{cases} 1 & \text{if parcel } p \text{ is in class } k \text{ in future year 2040} \\ 0 & \text{otherwise} \end{cases}$

$x_{pk}^0 \equiv$ initial value for year 2014

$L_{k'} \equiv$ the set of LULC classes to which a parcel initially assigned to k' can transition, $\{k \ni t_{k' \rightarrow k} > 0\}$

(for a given parcel p , x_{pk} is defined only if $k \in L_{k'}$, where $x_{pk}^0 = 1$)

$a_p \equiv$ area of parcel p

$A_k \equiv$ total area initially assigned to class $k = \sum_p a_p x_{pk}^0$

$T_k \equiv$ target future area assigned to class $k = \sum_{k'} A_{k'} t_{k' \rightarrow k}$

$y_k \equiv$ deficit of class k

$z_k \equiv$ surplus of class k

Choose x_k, y_k, z_k to minimize $\sum_k (y_k + z_k)$ subject to

$$\sum_k x_{pk} = 1 \quad \forall p$$

$$\sum_p a_p x_{pk} + y_k - z_k = T_k \quad \forall k \quad (\text{total area constraint})$$

$$y_k, z_k \geq 0 \quad \forall k$$

$$x_{pk} \in \{0, 1\} \quad \forall p, k$$

We assigned parcels by solving the mixed-integer linear programming model above using the CPLEX² solvers for each county. For a given county, the input data include information about each parcel, p , including its area (a_p) in hectares and its initial LULC class (k' s.t. $x_{pk}^0 = 1$). We can calculate the total area assigned to an LULC class k as shown above. We are also given a transition matrix based on POLYSYS results specifying the probabilities ($t_{k'k}$) of a parcel transitioning from any particular LULC class k' in 2014 to another LULC class k . These probabilities are used to generate the expected area, T_k , assigned to an LULC class k in the future. The goal of the optimization problem is to generate a set of assignments of parcels to LULC classes (x_{pk}) such that each parcel is assigned to exactly one LULC class, and the total area of parcels assigned to a LULC class match the total-area target as closely as possible. Ideally, we would like $\sum_k A_k t_{k' \rightarrow k} = T_k$. The initial LULC class of a parcel (k') limits the set of possible future LULC classes to those with a positive transition probability.

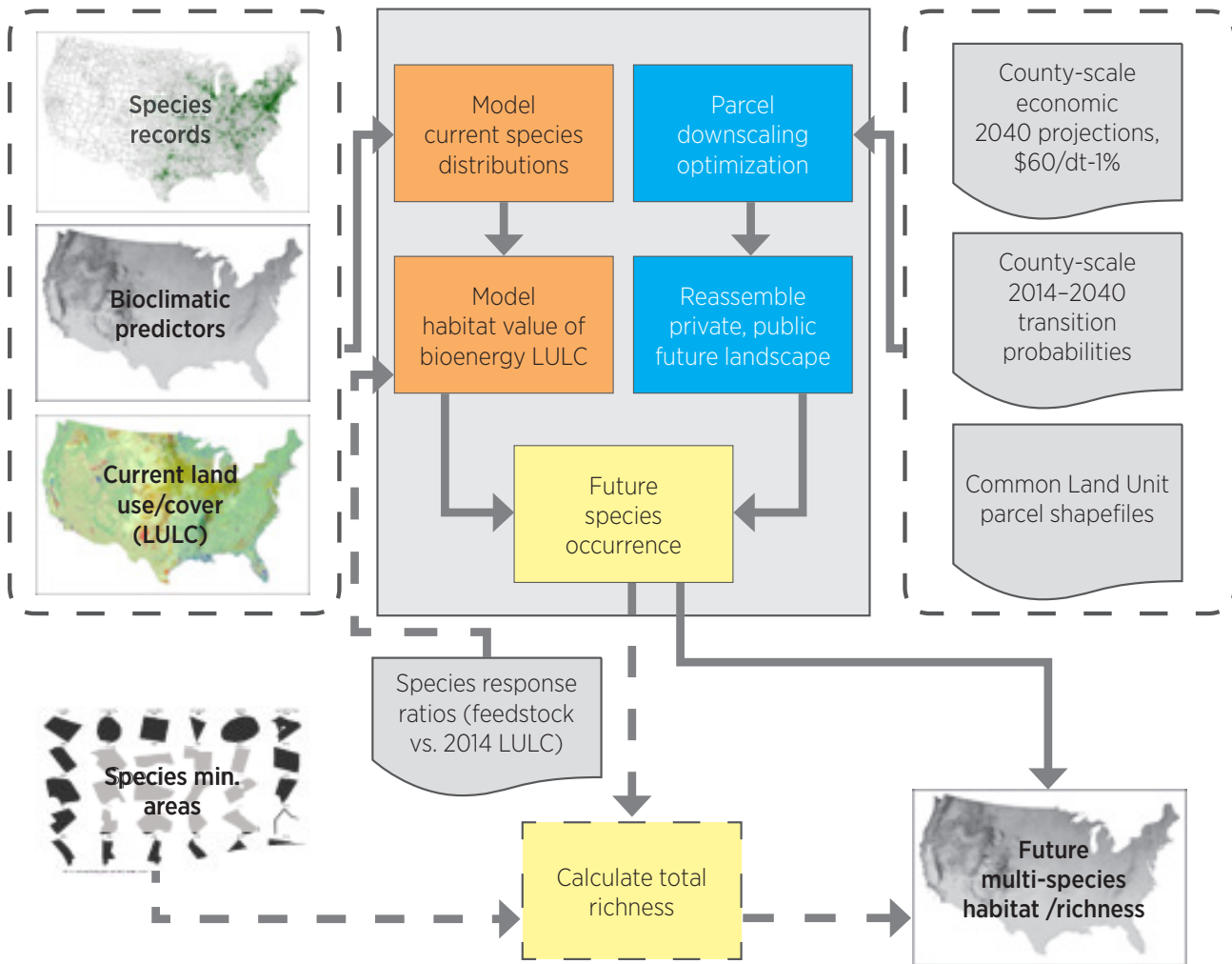
A complete future 2040 landscape was produced by overlaying the CLU parcels on the unchanged 2014 map. This was accomplished by joining parcel shape-files with downscaled LULC in the attribute table using the “add join” tool in ArcGIS®. The resulting layer was then converted into a raster file using the “polygon to raster” tool and merged with the original CDL-2014 map.

10.3.2 Overview

Our estimation of species richness in projected landscapes follows the process illustrated below (fig. 10.1). SDMs for each species were developed from occurrence data and landscape predictors for the year 2014 (fig. 10.1, far left). Three alternative approaches were used to project future occurrences (see section 10.3.5; fig. 10.1, middle). For each species, the result was a map projecting future likelihood of occurrence (fig. 10.1, middle) for year 2040 (fig. 10.1, far right).

² IBM ILOG CPLEX Optimization Studio software.

Figure 10.1 | Framework used to evaluate how bird richness might change under a future bioenergy scenario.



Our approach to estimating the habitat value of LULC that produce biomass crops depends on quantitative studies comparing habitat value of the biomass LULC and other classes. Because habitat comparisons that are required to estimate habitat value are not available for all combinations of LULC and dedicated energy crops, we present results only for bird species for which we have comparisons. We have two groups of species: (1) a set of predominantly grassland species for which comparisons of habitat value of switchgrass versus grassland were available, and (2) a set of predominantly forest and generalist

species for which comparisons of bird response to SRWCs versus forest were available. These were modeled separately, with effects of changes in the geographic distribution of sorghum included for both. The approach is described in section 10.3.5.

Our primary goal in building models was to estimate the current habitat value of each parcel for different species in current and future landscapes. We developed an index of change in bird richness by summing probabilities of occupancy across species at either the grid cell or county scale.

10.3.3 Species Distribution Modeling

We used boosted-regression tree methods (Elith, Leathwick, and Hastie 2008) to develop species distribution models (SDMs) that included LULC classes and bioclimatic variables, including elevation, as predictors (fig. 10.1). The outputs of the SDMs were local estimates of the probability of occupancy by a species within 1-km raster pixels for the conterminous United States.

SDMs require data on the presences and absences of a species across a landscape to estimate the relative likelihood of occurrence in a particular location (Guillera-Arroita et al. 2015). We collected presence records for selected species. These spatially referenced biodiversity data were derived from point locations reported in the Biodiversity Information Serving Our Nation database (USGS 2013). A series of steps were required to modify these data so that the records would be useful inputs to the SDMs. First, we excluded fossil records, records without a known type, and records dated prior to 1990. Second, we accounted for the use of presence-only data, which are generally not systematically sampled and lack any substantive information about species' absences (Hertzog, Besnard, and Jay-Robert 2014). We controlled for this potential sampling bias by generating pseudo-absences from locations where similar species have been reported ("target-group background sampling" per Phillips et al. (2009)). Each SDM was based on an approximately equal number of presences and randomly sampled pseudo-absences from the target group (Barbet-Massin et al. 2012).

We used a machine-learning algorithm [boosted regression trees, (Elith, Leathwick, and Hastie 2008)] to estimate the geographic distribution of habitat suitable for each bird species based on a consistent set of bioclimatic variables and LULC data at a 30 arc-second resolution ($\sim 1 \text{ km}^2$) throughout the conterminous United States (Hijmans and Graham 2006). These layers were transformed from raw temperature

and rainfall inputs between 1950 and 2000 to generate long-term climate measures, which are considered biologically meaningful as predictors in species distribution modeling (Booth et al. 2014). In addition to these bioclimatic variables, we included LULC class from the 2014 CDL and US Environmental Protection Agency (EPA) Tier II ecoregions as categorical variables.

We split all records into 70% training and 30% test sets, and we assessed our SDMs by their out-of-sample prediction accuracy on the test set. We excluded models not significantly more accurate than the no-information rate, or 50%, for this binary classification. All SDMs were formulated as boosted regression trees. This method produced models demonstrating a high level of accuracy here and in previous studies (Elith, Leathwick, and Hastie 2008). All SDMs were built with the "caret" package, which is used to conduct training of classification and regression tree models (Kuhn 2008) in the R computing environment (R Core Team 2014). Our SDMs predicted the probability of occurrence of a species and could also predict a binary presence (occupancy) or absence for each 1-km² grid cell across the conterminous United States. Summing these estimates produces an index of bird richness for each grid cell.

10.3.4 Modeling Occupancy in Extant LULC Classes

For each species, we used the SDM developed above to predict probabilities of occurrence, $P[s | \mathbf{x}, \mathbf{L}]$, based on spatial bioclimatic predictors and LULC at each location \mathbf{x} . The resulting spatial field of probabilities is used to estimate each parcel's habitat value, $P[s | \mathbf{x}, \mathbf{L}]$.

Our goal is to estimate the effect of each extant LULC class, k , on the probability of occurrence (or habitat value) for each species s as a function of average bioclimatic conditions in parcel p . In future landscapes, some downscaled parcels will transition to a new LULC, L_k . Let vector \mathbf{L} contain: (1) $k = 1$ to r classes that are well represented in the extant U.S.

landscape and $k \geq r$ perennial grasses classes grown as feedstocks for bioenergy, and (2) $k > t$ ($t > r$) represent woody crops that are not currently well represented but that occur in future *BT16* landscapes.

Different approaches were required for LULC transitions to LULC that are well represented in the current landscape (e.g., sorghum) and for those not currently widespread but expected to increase in the future (e.g., switchgrass, miscanthus, SRWC; see fig. 10.1). We developed approaches for each of three types of LULC conversions, conversions to sorghum, conversions to perennial grasses, and conversions to SRWC):

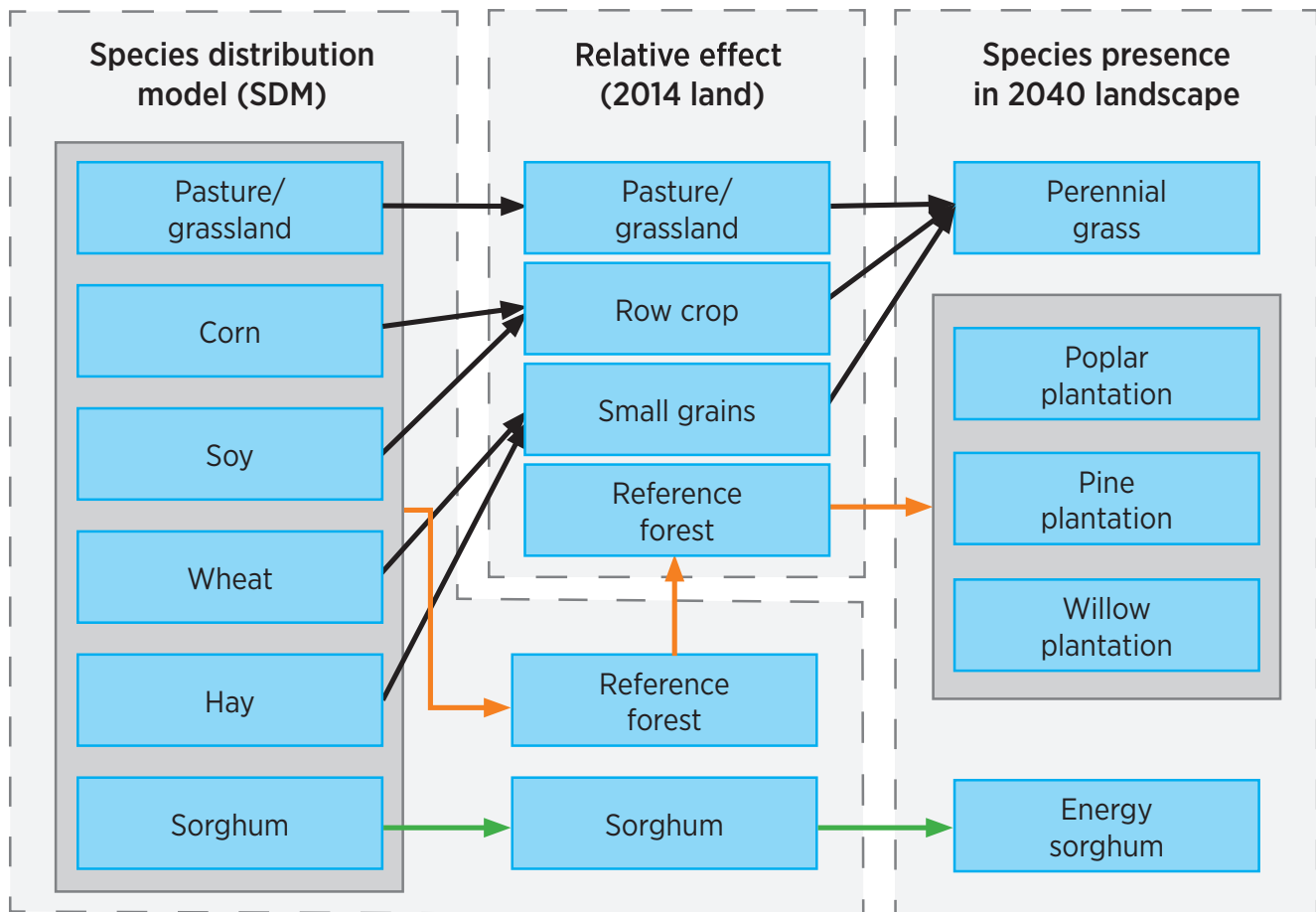
1. $k \leq r$: L_k was sufficiently well represented in the extant 2014 landscape. In this case, we could use the SDM value to estimate $P[s | \mathbf{x}, L_k]$. In our analysis, both sorghum and energy cane were estimated by using the SDM for sorghum.
2. $r < k \leq t$: L_k is a perennial grass that is projected to be used as a feedstock in the future, but its habitat value cannot be estimated from the current SDM.
3. $k > t$: L_k is an SRWC that is projected to be used as a feedstock in the future, but its habitat value cannot be estimated from the current SDM. Literature compares species' performance in SRWC with that in natural forest types, but not agricultural LULC.

10.3.5 Modeling Occupancy in Biomass Crops as LULC Classes

The transitions considered in our analysis are illustrated in figure 10.2. For parcels of biomass-producing LULC classes that are not currently widespread, we developed a new method for estimating habitat value. We conducted a literature review of species to find studies that compare bird densities in different LULC categories (including lands managed to produce dedicated bioenergy feedstocks). For the LULC class growing dedicated biomass crops, we compared densities under different harvest-management practices. Two meta-analyses of such studies calculated and reported response ratios in a consistent manner, reflecting the ratio of bird densities (Riffell et al. 2011, Robertson et al. 2012). However, comparative data were not available for all transitions for all species. For transitions that we were unable to model, we did not alter the suitability of gridcells to reflect a change in LULC. We separately report results for three groups of bird species and types of LULC change from non-biomass to biomass crop: (1) predominantly grassland bird species in perennial grasses, and (2) predominantly forest birds in SRWC, and (3) generalist birds in SRWC. Birds with generalized habitat preferences are those that either prefer forest edge, those that occur both in grasslands and forest or in savannah.

In the following sections, we describe modeling pathways (fig. 10.2) for estimating occupancy in landscapes, including (1) sorghum and energy cane, (2) SRWC, and (3) perennial grasses.

Figure 10.2 | Inference for future landscape scenarios is based on literature values of relative effects of land use classes on individual species. Note that different processes are required to model transitions to switchgrass (black arrows), SRWC (orange arrows) than to sorghum or energy cane (green arrows).



10.3.5.1 General Model

Let $D_{(k,h)}^s$ denote the density of a species, s , in LULC class j . The response ratio, RR , of species s , for two LULC classes, one currently prevalent in the land-

scape ($i \leq r$) and one future biomass LULC ($j > r$), is given by equation 10.2, with a constant, $\delta = 0.001$, added to avoid dividing by zero in the case of zero density in the 2014 LULC.

Equation 10.2:

$$RR_{(i,j)}^s = \left(\frac{D_{(j)}^s + \delta}{D_{(i)}^s + \delta} \right), \quad i \leq r; j > r$$

We modeled the relationship between the probability of occurrence, P , in the old, i , and new, j , LULC using equation 10.3. This form is motivated by models that separate the observational process and represent the probability of detection as a function of abundance (Royle and Nichols 2003). The probability of

detecting at least one animal, given that animals are present, is equal to one minus the probability of not detecting all animals at the site. Here, we modeled the change in detection probability by treating the individual units as groups of organisms equivalent in number to those in the original LULC.

Equation 10.3:

$$P[s | \mathbf{x}, L_j] = 1 - (1 - P[s | \mathbf{x}, L_i])^{RR_{(i,j)}^s} \quad i \leq r; j > r$$

10.3.5.2 Sorghum and Energy Cane

We assumed that energy cane, energy sorghum, and sorghum grown for food had similar habitat value. Historical use of sorghum as habitat was modeled by the SDM. Therefore, we estimated future occurrence of birds in sorghum and energy cane directly (fig. 10.2).

10.3.5.3 SRWCs

Projecting bird occupancy in future SRWC plantations on agricultural lands required a two-step process (fig. 10.2). We estimated the habitat value of the locally prevalent forest type (fig. 10.3) before applying the forest-to-SRWC plantation response ratio (fig. 10.4). Note, this is simply an accounting trick

because many studies have compared bird densities in managed LULC to densities in forest, but none have compared densities in different managed LULC including one managed for biomass crops. *In other words, transition of forest lands to SRWC was not simulated in the BC1 2040 scenario.* We obtained SDM predictions of occupancy probabilities, $P[s | \mathbf{x}, L_j]$, by creating a transitional national LULC map, where the grid cells in the baseline LULC map with SWRCs under future scenarios were substituted by locally prevalent forest types. Next, we applied the conversion from equation 10.3 using the appropriate response ratios reported for 40 birds found in forest or open woodland and edge habitat (Riffell et al. 2011).

Figure 10.3 | Dominant forest type for 1-km pixels of the conterminous United States. This information is needed to implement a two-stage estimation process of bird probability of occupancy in short-rotation woody crop plantations.

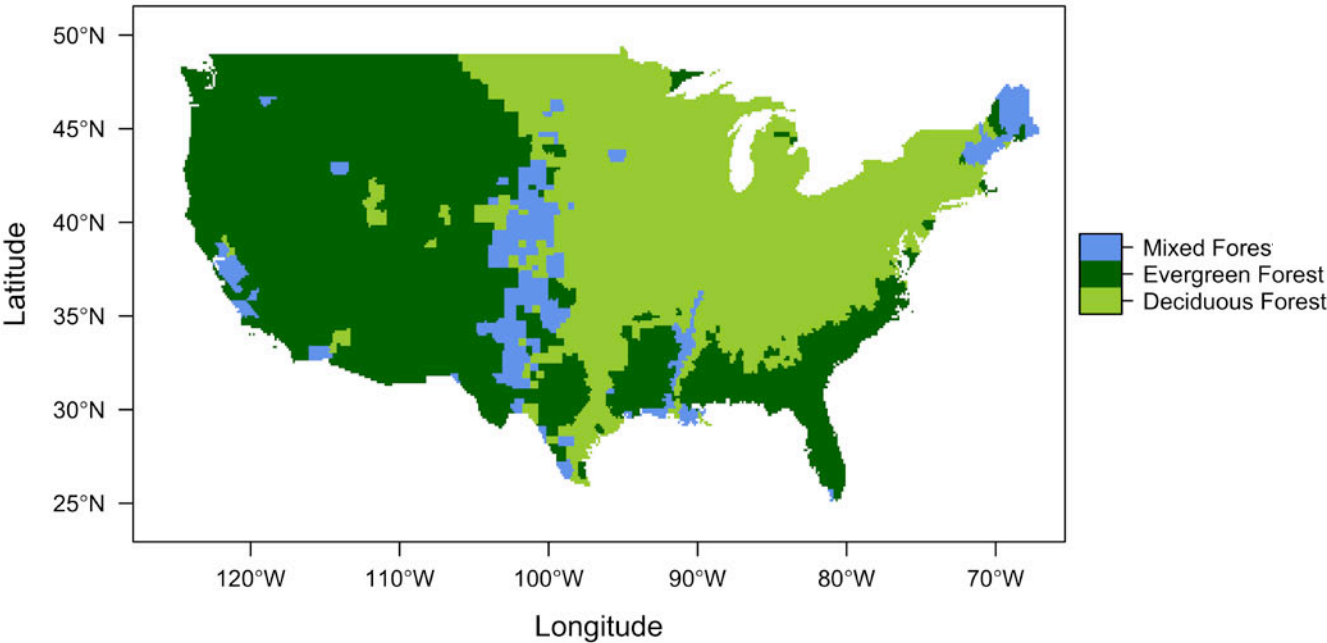
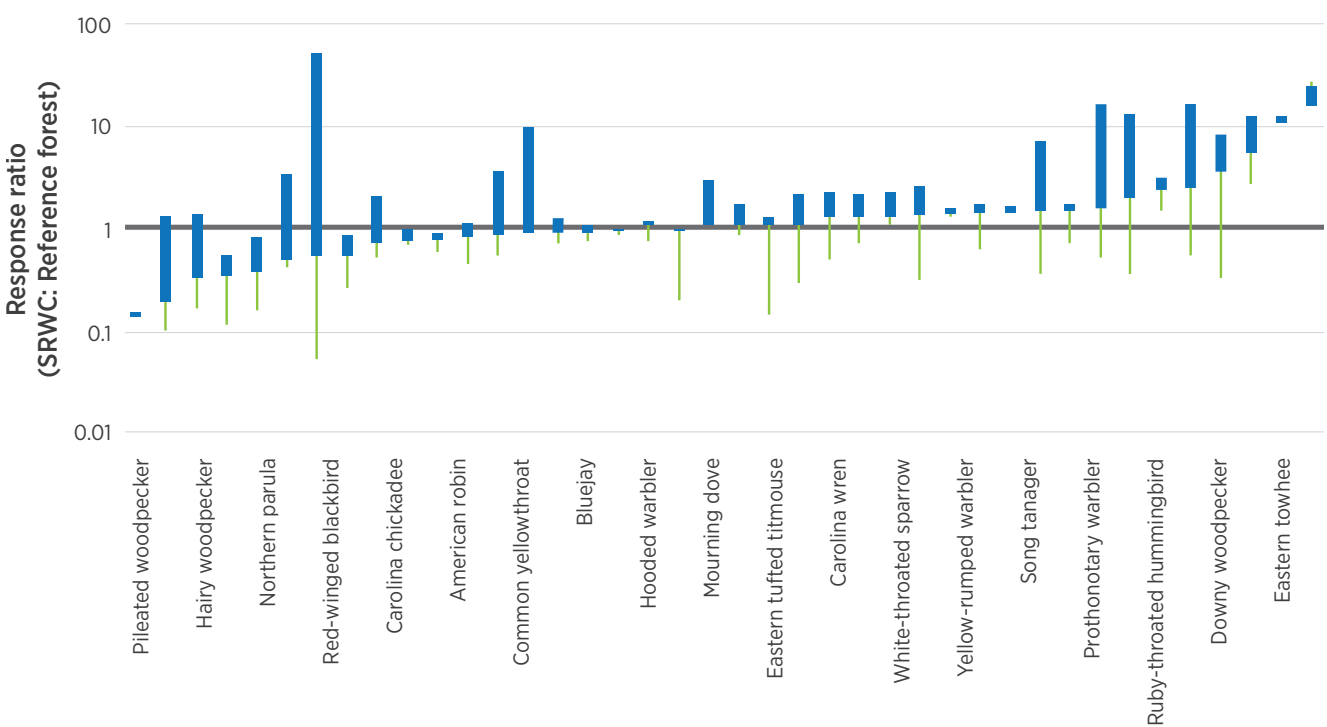


Figure 10.4 | Response ratios for forest and generalist birds to local reference forest used in two-step process.

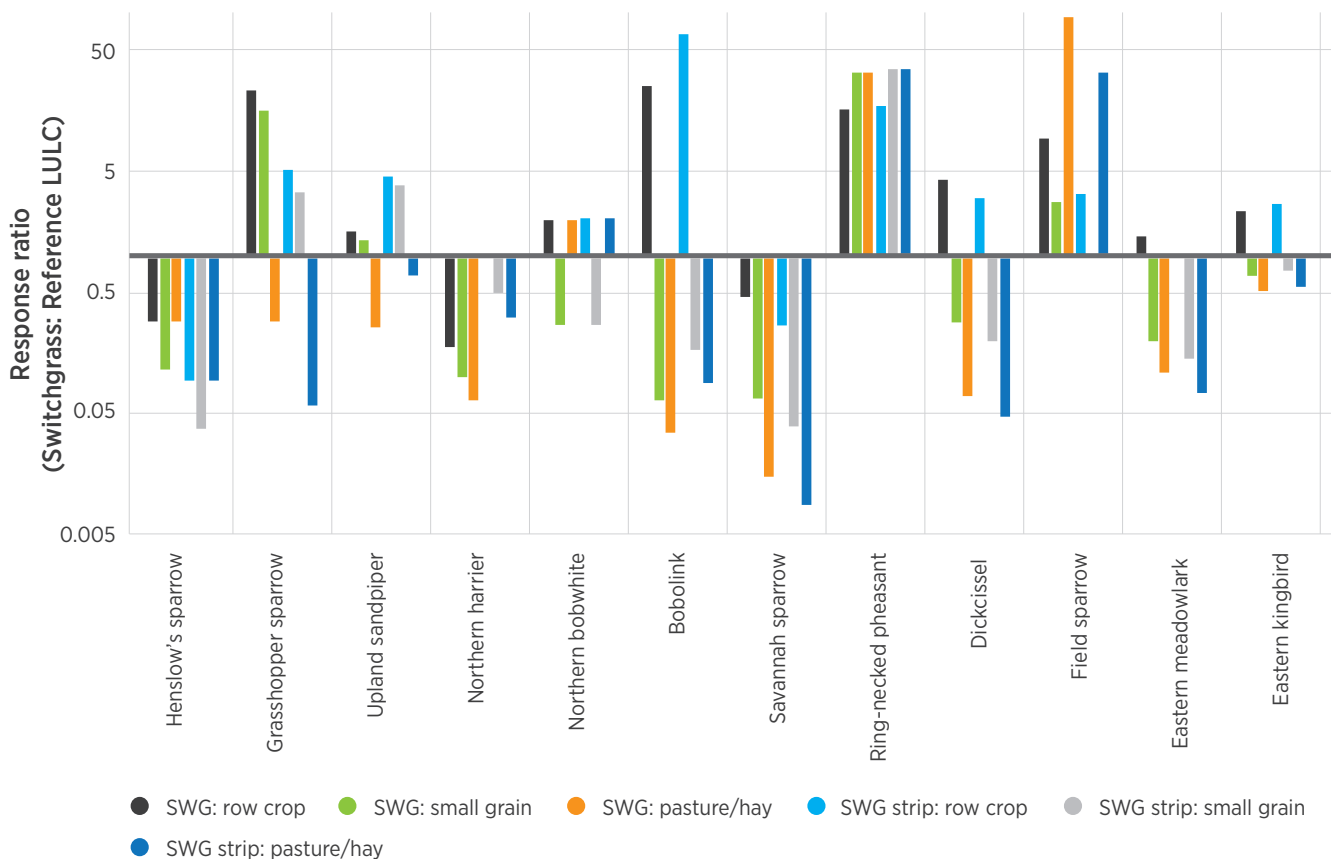


10.3.5.4 Perennial Grasses (Switchgrass and Miscanthus)

For switchgrass, we used estimated response ratios summarized by Robertson et al. (2012) based on data collected from Fletcher et al. (2011) for 12 grassland bird species (fig. 10.5). Comparisons allowing us to model transitions to switchgrass were available for three classes of agricultural LULC: (1) pasture/grassland and hay; (2) row crops (as defined by Robertson et al. [2012]) including corn, cotton, and soybean; and (3) small grains, including barley, sorghum, rice,

oats, and wheat (fig. 10.2). To account for harvest management for switchgrass, we multiplied by an additional management response ratio, i.e., the ratio of bird density in switchgrass fields harvested in a certain way to its density in unharvested switchgrass (fig. 10.5). Bird densities were reported for switchgrass fields with strip harvest and total harvest (Best and Murray 2003). Thus, for switchgrass, we have comparable densities for bird species in three extant LULC classes (small grains, pasture, and row crops) and in switchgrass managed in each of two ways.

Figure 10.5 | Response ratios for grassland birds in total- and strip-harvested switchgrass (SWG).



For miscanthus, we adopted a ‘precautionary’ approach. Published studies related to the suitability of miscanthus as a habitat are not yet available for birds in the United States (Vandever and Allen 2015). At this point, there is no evidence that miscanthus is used as nesting habitat for songbirds⁴ in the Midwest, and songbird densities in miscanthus were much lower than densities in surrounding grasslands.⁵ Therefore, we assumed that parcels that transitioned to miscanthus had zero habitat value.

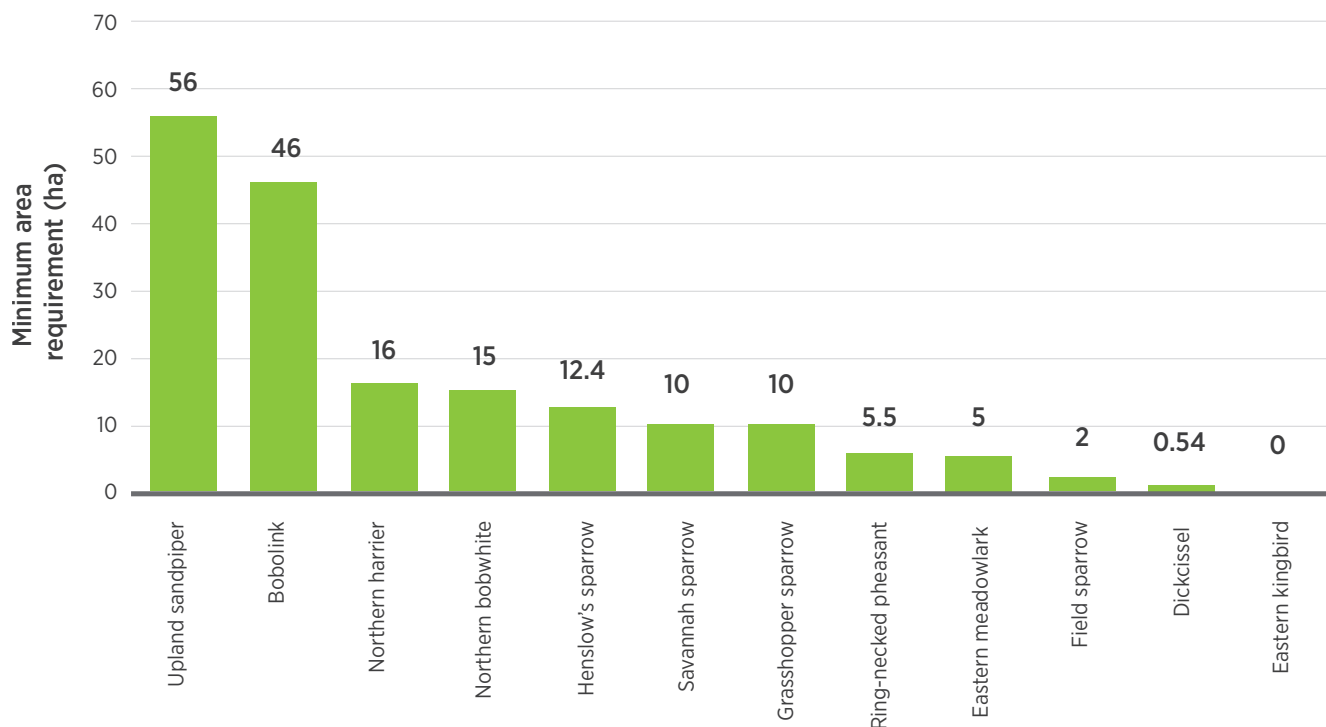
10.3.6 Accounting for Minimum Area Requirements

A subset of species with specialized habitat needs require a minimum area of habitat to persist in habitat patches. Bio-EST can account for such area thresh-

olds. By overlaying the patch raster and the habitat SDM and removing habitat areas associated with small patches, we accounted for area sensitivities of birds. Therefore, CLU parcels that might otherwise have had a positive probability of occupancy (habitat value) were considered unoccupied if the total area of the patch and surrounding lands (including public lands), was too small to support the species. The “raster” package in R was used to define habitat patches and to calculate patch sizes.

As a test case, we compared the estimated number of occupied grid cells for 2014 and the future map consistent with BC1 2040 for grassland birds with estimates of minimum area requirements >0 (appendix A, table 1; fig. 10.6).

Figure 10.6 | Minimum habitat area requirements for selected bird species



⁴ Songbirds are in the order *Passeriform* (i.e., ‘perching birds’), which includes most grassland birds considered here. Non-passerine species considered here include the upland sandpiper and ring-necked pheasant.

⁵ R. L. Schooley, University of Illinois, email to H. Jager, June 23, 2016.

10.3.7 Projecting Changes in Richness

The methodology above (equations 10.2–10.3) allowed us to generate raster maps quantifying the likelihood of occurrence for each species. Richness maps result from aggregating predicted occurrences for three groups of species: a set of 12 predominantly grassland species and two sets of “forest” species for which we have data describing transitions to SRWC (see appendix A), referred to as forest specialists and generalists. For grid cells, we added the occupancy probabilities across the map to estimate the number of occupied 1-km² grid cells. For counties, we estimated the number of counties occupied in 2014 versus 2040 (BC1 2040), the change in the estimated number of occupied counties, and changes in richness. Analyses are reported separately for the grassland, forest specialist, and forest generalist species. Data were available to model LULC transitions to perennial grasses and energy sorghum (not SRWCs)

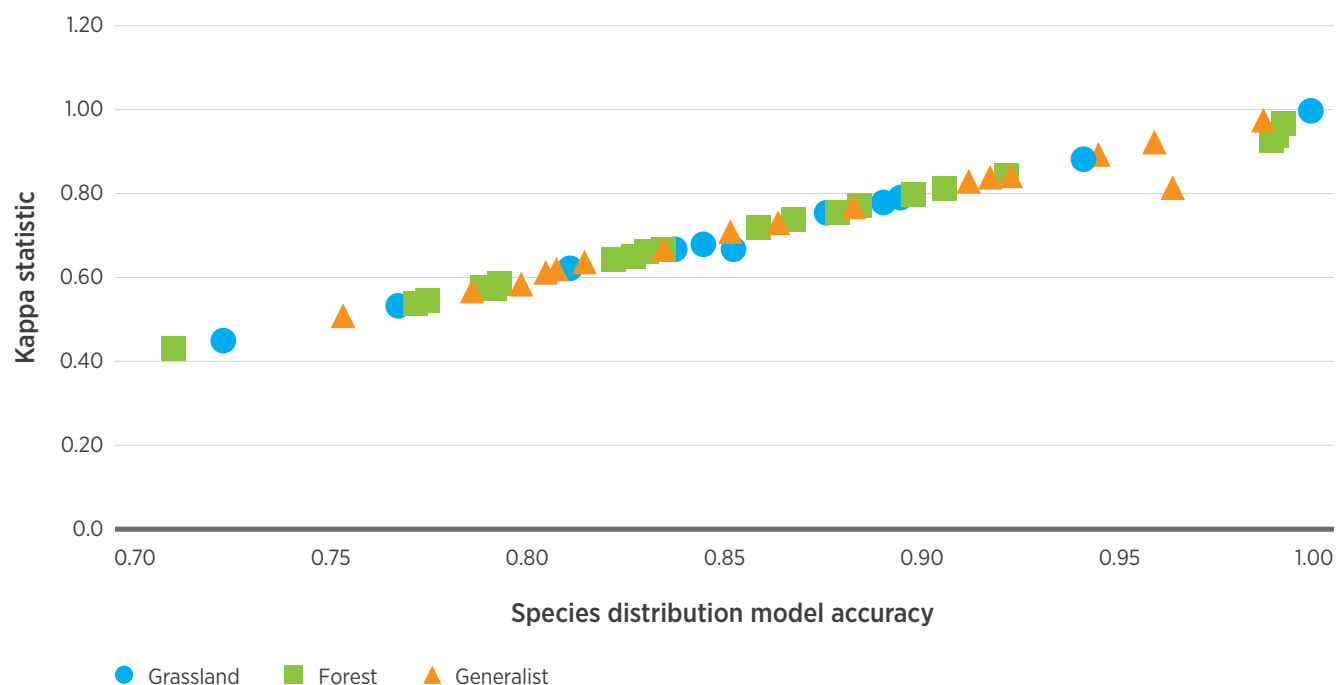
for birds in the grassland group. Data were also available to model LULC transitions to SRWCs and energy sorghum (but not perennial grasses) for birds in the forest specialist and generalist groups. We recognize that there is some subjectivity in how these sets are defined.

10.4 Results

10.4.1 Species Distribution Modeling

Overall, the performance of SDMs was excellent. For the testing set, accuracy varied from 0.71 to 1.0 (all p -value <0.0001) across the 52 bird species modeled (fig. 10.7). Kappa statistics on the same set varied from 0.42 to 1.0 (all p -value <0.0001), with 79% of the kappa statistics (i.e., 41 out of 52 species) exceeding 0.6. Kappa values above 0.6 demonstrate substantial strength of agreement (Landis and Koch 1977).

Figure 10.7 | Performance metrics for species distribution models for 52 bird species (each point) calculated for the test subset of data. Each point represents one species.



10.4.2 Minimum Habitat Area

In an exploratory analysis, we removed small patches of habitat below the minimum habitat threshold of each grassland species. Because the effects were applied to future occupancy maps of both the reference 2014 case and BC1 2040 scenario, the resulting differences in range, measured in the number of counties occupied, were small and very similar for the 2014 and future landscapes (average 2.85% [SD = 0.68%] difference for 2014 map, 2.88% [SD = 0.62%] for BC1 2040 with strip harvest). Therefore, results presented here do not consider minimum habitat area.

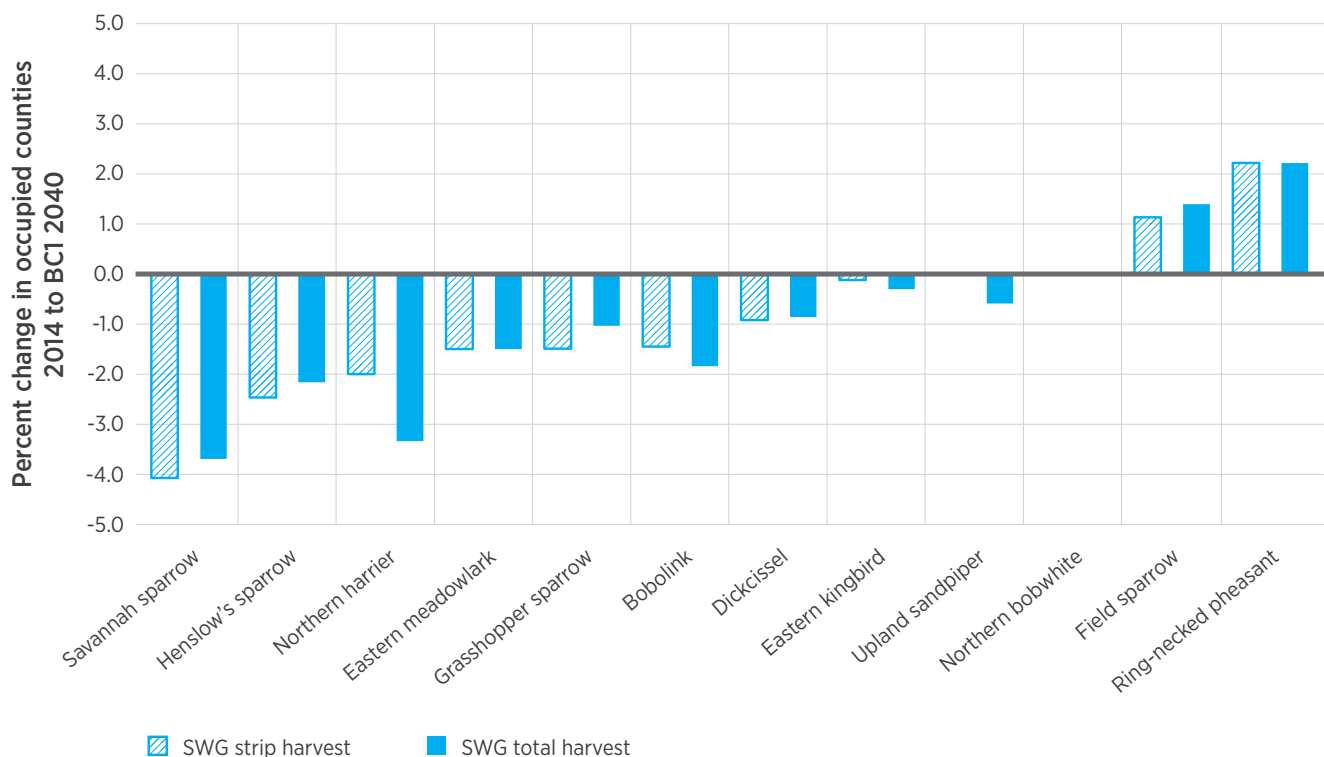
10.4.3 Projected Changes in Richness under BC1 2040 Scenario

Our simulations excluding miscanthus showed no change in projected occupancy from the 2014 to the

BC1 2040 landscape for most 1×1-km grid cells (>98% for both groups). However, in addition to lack of response to LULC change, this result is partly because we did not have information to simulate all possible transitions and partly because non-private lands were not permitted to change LULC. Decreases were projected in 0.13% of grid cells for grassland species, 1.4% for forest specialists, and 0.36% for generalists. Increases were projected in 1% of grid cells for grassland species, 0.07% for specialists, and 1.13% for generalists (fig 10.8).

Geographic patterns in grassland species reflect responses to management of agricultural lands to BC1 2040 future switchgrass (strip harvest) and energy sorghum (fig. 10.9, top row). Patterns for forest Projected decreases appear to be concentrated in the middle of the country (fig. 10.9).

Figure 10.8 | Change in the estimated percentage of counties occupied by grassland bird species between the 2014 landscape and a future landscape consistent with the BC1 2040 scenario. Results are shown for two management regimes include strip harvest and total harvest of switchgrass (SWG).



For forest birds (specialist and generalist species), no change in richness was estimated for 99.2% of grid cells between the 2014 and the BC1 2040 LULC..

Increases occurred in <1% of the grid cells for both forest generalists and specialists. Likewise, decreases occurred in <1% for both types. (fig. 10.10).

Figure 10.9 | Change in projected richness under the 2014 landscape (left column), a landscape consistent with the BC1 2040 future scenario (middle column) and differences (right column) for three groups of species. Rows display distributions for grassland, generalist, and forest specialist species. The range for differences in richness displayed by the legend row (below headers) is indicated below each map.

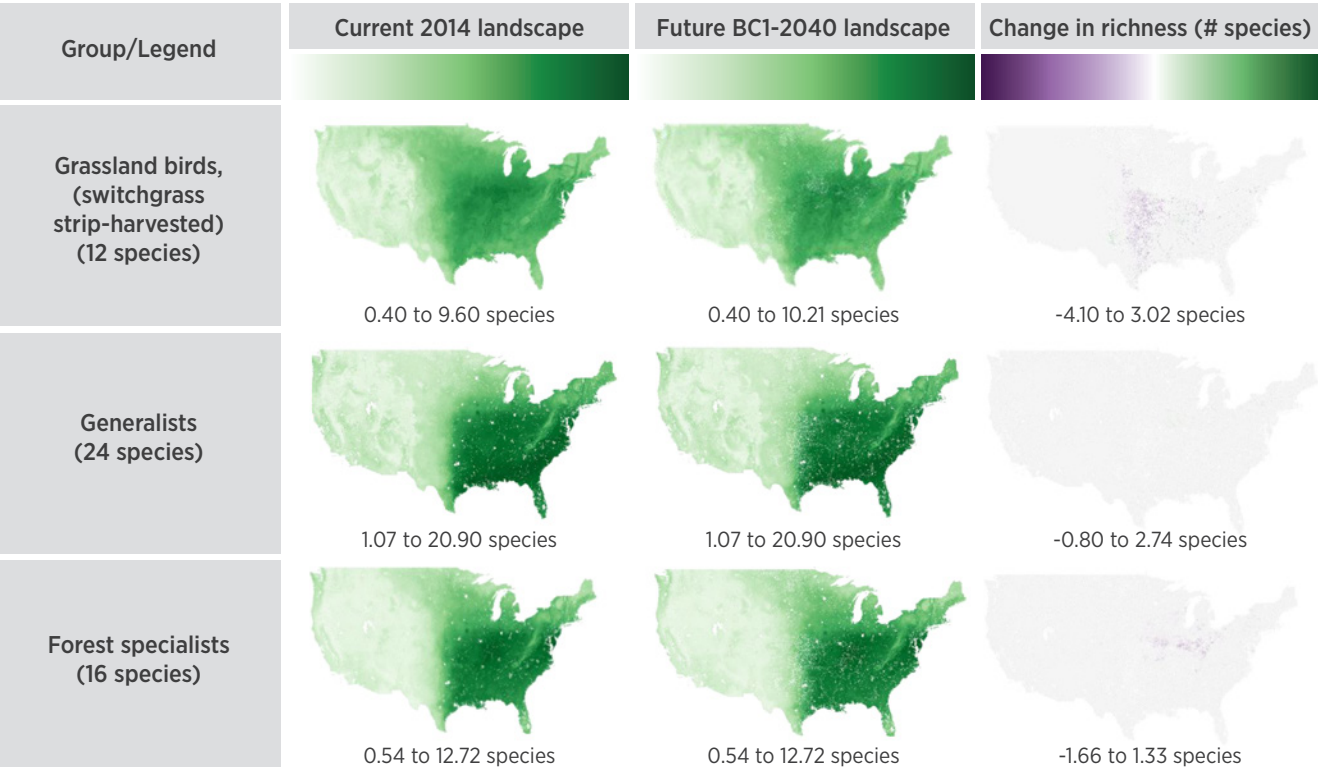
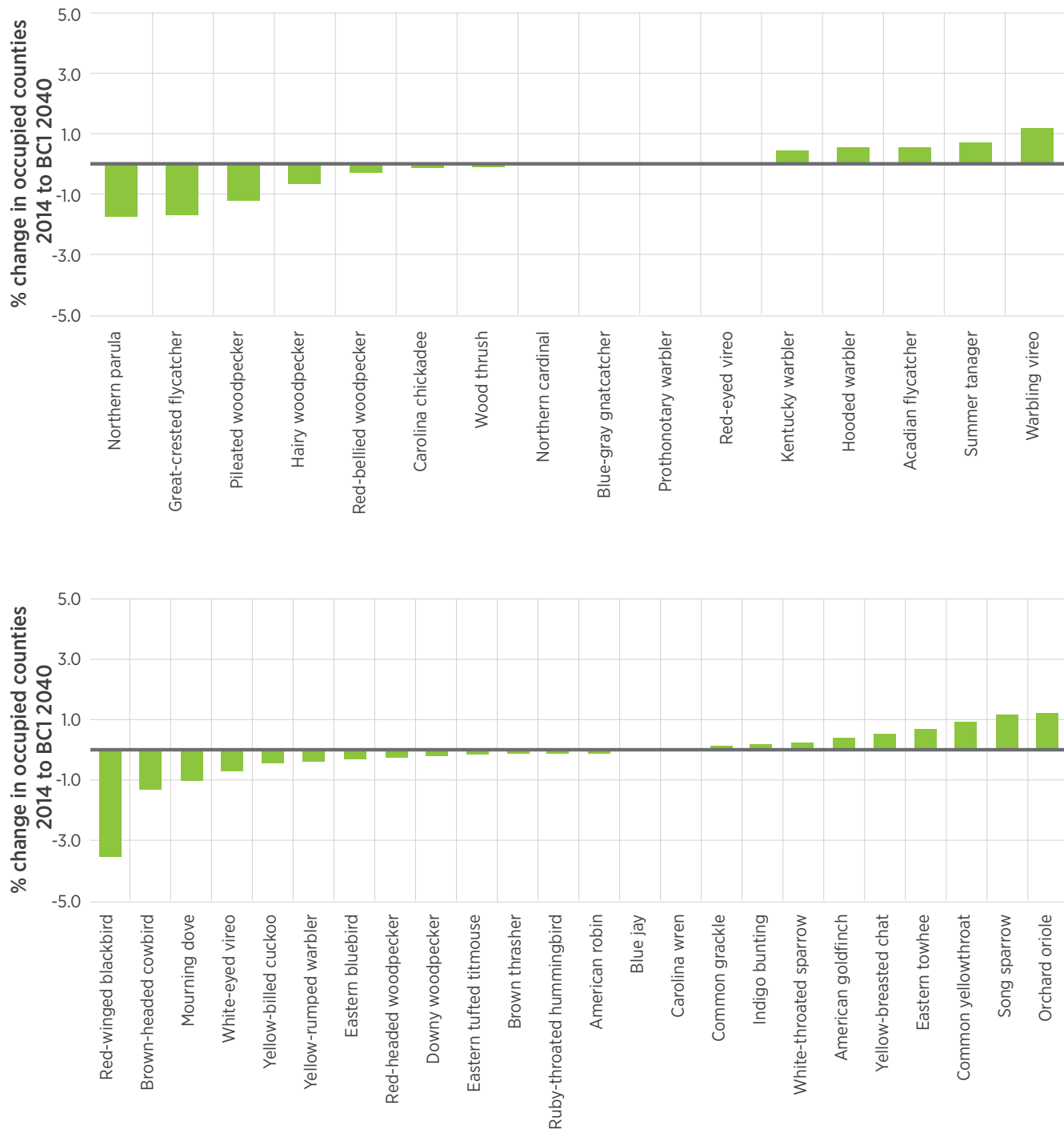


Figure 10.10 | Change in the modeled percentage of counties occupied by species designated for purposes of this analysis as a) forest specialist and b) generalist bird species between the 2014 landscape and a future landscape consistent with the BC1 2040 scenario.



To understand the LULC changes driving these results, we summarized LULC changes that would result in changes of more than 80% in richness at the grid-cell scale, all of which were planted in switchgrass in the BC1 2040 landscape. Positive changes in grassland bird richness were dominated by grid cells that were planted in cotton or corn in 2014 (1,138 grid cells), whereas negative changes were dominated by grid cells planted in pasture or hay in 2014 (14,777 grid cells). Grid cells with positive changes in generalist bird species were planted in corn (19 grid cells) or wheat (11 grid cells) in the 2014 landscape and non-coppice wood (poplar) in the BC1 2040 landscape. Grid cells that decreased in richness were in coppice wood (willow) in the BC1 2040 landscape and pasture (70 grid cells) or soybeans (20 grid cells) in the 2014 landscape. Grid cells associated with negative changes in the number of forest bird specialists were predominantly in coppice wood (willow) in the BC1 2040 landscape and in soybeans (3,057 cells) or corn (144 cells) in 2014.

10.5 Discussion

Results presented here for grassland and woodland/forest birds in the BC1 2040 scenario are consistent with our expectations about the potential costs and/or benefits of growing dedicated bioenergy crops. Among grassland birds, projections showed the potential for increases in range for ring-necked pheasant and field sparrow, and decreases (or no change) for others. It is important to note that our assumptions about miscanthus were precautionary (we assumed zero habitat value for this crop, which represented 77,821 km² in the BC1 2040 landscape). Interestingly, strip harvest did not consistently increase occupancy across grassland species compared with total harvest. It should be noted that grassland-obligate species are better served by patches of habitat with high area-to-perimeter ratios, i.e., blocks, not strips (Helzer and Jelinski 1999; Roth et al. 2005).

Further analysis to understand how different taxa responded could help to explain the risk or benefits to

species with different life histories and habitat needs. The analysis presented here can also be extended to represent other wildlife taxa once enough comparisons of wildlife performance (e.g., density, reproductive success) in multiple food crop and biomass crop habitats have been made. For example, studies have quantified the benefits of energy crops as a habitat for pollinators (Meehan et al. 2012; Bennett et al. 2014; Bennett and Isaacs 2014) and for other beneficial insects, for example, those that provide pest-control services (Werling et al. 2011). In comparison to birds, few studies have focused on quantifying the habitat value of biomass crops for other taxa (e.g., mammals, amphibians, and reptiles).

Our analysis involved some simplifying assumptions to allow for a national-scale assessment. It uses an implicit “equilibrium” assumption. In other words, we compare a recent landscape with one potential future landscape, but not with transient influences of the crop transition on occupancy, which could incur higher, but possibly temporary, impacts. The timing of management changes might help to alleviate potential stresses caused by change. Birds are mobile taxa that could be more resilient to changes in land management than other taxa, except during mating, nesting, and incubation.

Finally, we join other ecologists by offering the suggestion that benefits to birds (and other wildlife) can be attained by implementing wildlife-friendly practices (Meehan, Hulbert, and Gratton 2010; Robertson et al. 2012; Ridley et al. 2013). Birds tend to be at their most vulnerable to disturbance by management activities during nesting. Impacts to nests can be avoided by timing farm operations prior to the summer nesting season and between harvest and the summer nesting season. Timing harvest to occur outside of the nesting season is more feasible for grasses grown for biomass than for hay and other crops that quickly lose their quality as forage for animals if harvested in the fall. Furthermore, potential for harvest after winter can be explored to provide resident birds with cover and forage during winter. In addition, using a

flushing bar and raising the height of mowing equipment can help to avoid nests and animals during farm operations; and, simply harvesting from the inside out, instead of trapping wildlife in the center of a field, can be beneficial. These, and other best-management practices can help to manage bioenergy crops with an eye toward protecting biodiversity (McGuire and Rupp 2013; Brooke et al. 2009).

10.6 Future Directions

Future research can address ways to design biomass-production methods that benefit biodiversity, as well as producing feedstocks for bioenergy or other uses:

- Research is required to increase the feasibility of production systems that employ more diverse communities of plants as feedstocks, including forbs and other plants typically found in native prairie. Such plant communities have been found to support more diverse communities of insects and possibly other taxa. In conjunction with research on diverse feedstock production, research is needed to understand barriers to the conversion of complex cellulosic feedstock streams.
- This assessment relied on field comparisons of wildlife in other crops or LULC classes and biomass-producing lands. These data are needed to quantify the responses to bioenergy crops by other taxa. In particular, information about potential habitat value of miscanthus and eucalyptus is lacking. These non-native species may or may not provide similar habitat to pre-existing native vegetation.
- Research is needed to understand logistic and economic barriers that could prevent farmers from adopting practices that benefit wildlife. Some of these barriers might be overcome by developing innovative technologies (smart tractor systems) and new wildlife-friendly practices.
- The relative effects of pesticide use for bioenergy feedstocks and for other managed lands, as well as trade-offs between pesticide use and other potentially beneficial practices (e.g., tillage), have not been studied and quantified or related to wildlife performance.
- Benefits of seed-producing crops to wildlife are well known (Guthery 1997). However, the wildlife and production co-benefits of integrating production of biodiesel crops, such as soybeans and canola, with cellulosic feedstock production have not been explored.
- Future research can help to identify geographic hotspots where attention to wildlife-friendly practices is needed. In addition, trait-based guidance can be developed to guide farmers and SRWC growers toward practices that protect and support local wildlife of conservation concern.

10.7 References

- Ando, A. 1998. "Species Distributions, Land Values, and Efficient Conservation." *Science* 279 (5359): 2126–8. doi:[10.1126/science.279.5359.2126](https://doi.org/10.1126/science.279.5359.2126).
- Askins, R. A., F. Chavez-Ramirez, B. C. Dale, C. A. Haas, J. R. Herkert, F. L. Knopf, and P. D. Vickery. 2007. "Conservation of Grassland Birds in North America: Understanding Ecological Processes in Different Regions. Report of the AOU Committee on Conservation." *Ornithological Monographs* 64: 1–46. doi:[10.2307/40166905](https://doi.org/10.2307/40166905).
- Barbet-Massin, Morgane, Frederic Jiguet, Cecile Helene Albert, and Wilfried Thuiller. 2012. "Selecting pseudo-absences for species distribution models: how, where and how many?" *Methods in Ecology and Evolution* 3 (2): 327–38. doi:[10.1111/j.2041-210X.2011.00172.x](https://doi.org/10.1111/j.2041-210X.2011.00172.x).
- Batt, S. 2009. "Human attitudes towards animals in relation to species similarity to humans: a multivariate approach." *Bioscience Horizons* 2 (2): 180–190. doi:[10.1093/biohorizons/hzp021.11](https://doi.org/10.1093/biohorizons/hzp021.11).
- Bennett, A. B., and R. Isaacs. 2014. "Landscape composition influences pollinators and pollination services in perennial biofuel plantings." *Agriculture Ecosystems & Environment* 193 (1): 1–8. doi:[10.1016/j.agee.2014.04.016](https://doi.org/10.1016/j.agee.2014.04.016).
- Bennett, A. B., T. D. Meehan, C. Gratton, and R. Isaacs. 2014. "Modeling Pollinator Community Response to Contrasting Bioenergy Scenarios." *Plos One* 9 (11). doi:[10.1371/journal.pone.0110676](https://doi.org/10.1371/journal.pone.0110676).
- Best, L. B., and L. D. Murray. 2003. "Bird responses to harvesting switchgrass fields for biomass." In *Transactions of the Sixty-Ninth North American Wildlife and Natural Resources Conference*, edited by J. Rahm, 224–35.
- Blank, P. J., D. W. Sample, C. L. Williams, and M. G. Turner. 2014. "Bird communities and biomass yields in potential bioenergy grasslands." *PLOS ONE* 9 (10): 1–10. doi:[10.1371/journal.pone.0109989](https://doi.org/10.1371/journal.pone.0109989).
- Booth, T. H., H. A. Nix, J. R. Busby, and M. F. Hutchinson. 2014. "Bioclim: The first species distribution modeling package, its early applications and relevance to most current MaxEnt studies." *Diversity and Distributions* 20 (1): 1–9. doi:[10.1111/ddi.12144](https://doi.org/10.1111/ddi.12144).
- Brooke, R, G. Fogel, A. Glaser, E. Griffin, and K. Johnson. 2009. *Corn Ethanol and Wildlife*. Washington, DC: National Wildlife Federation. <https://www.nwf.org/pdf/Wildlife/01-13-10-Corn-Ethanol-Wildlife.pdf>.
- Cook, J. H., J. Beyea, and K. H. Keeler. 1991a. "Biofuels - Answer to global warming or growing threat to biodiversity?" In *Forestry and Environment – Engineering Solutions, Proceedings of the American Society of Agricultural Engineers*, June 5–6, edited by B. J. Stokes and C. L. Rawlins, 21–31.
- Cook, J. H., J. Beyea, and K. H. Keeler. 1991b. "Potential Impacts of Biomass Production in the United States on Biological Diversity." *Annual Review of Energy and the Environment* 16: 401–31. doi:[10.1146/annurev.eg.16.110191.002153](https://doi.org/10.1146/annurev.eg.16.110191.002153).
- Dale, V. H., E. S. Parish, and K. L. Kline. 2015. "Risks to global biodiversity from fossil-fuel production exceed those from biofuel production." *Biofuels Bioproducts & Biorefining* 9 (2): 177–89. doi:[10.1002/bbb.1528](https://doi.org/10.1002/bbb.1528).

- Elith, J., J. R. Leathwick, and T. Hastie. 2008. "A working guide to boosted regression trees." *Journal of Animal Ecology* 77 (4): 802–13. doi:[10.1111/j.1365-2656.2008.01390.x](https://doi.org/10.1111/j.1365-2656.2008.01390.x).
- Evans, S. G., L. C. Kelley, and M. D. Potts. 2014. "The potential impact of second-generation biofuel landscapes on at-risk species in the US." *Global Change Biology Bioenergy* 7 (2): 337–48. doi:[10.1111/gcbb.12131](https://doi.org/10.1111/gcbb.12131).
- Fenoglio, S., T. Bo, M. Cucco, L. Mercalli, and G. Malacarne. 2010. "Effects of global climate change on freshwater biota: A review with special emphasis on the Italian situation." *Italian Journal of Zoology* 77 (4): 374–83. doi:[10.1080/11250000903176497](https://doi.org/10.1080/11250000903176497).
- Fletcher, R. J., B. A. Robertson, J. Evans, P. J. Doran, J. R. R. Alavalapati, and D. W. Schemske. 2011. "Biodiversity conservation in the era of biofuels: risks and opportunities." *Frontiers in Ecology and the Environment* 9 (3): 161–8. doi:[10.1890/090091](https://doi.org/10.1890/090091).
- Guillera-Arroita, Gurutzeta, Jose J. Lahoz-Monfort, Jane Elith, Ascelin Gordon, Heini Kujala, Pia E. Lentini, Michael A. McCarthy, Reid Tingley, and Brendan A. Wintle. 2015. "Is my species distribution model fit for purpose? Matching data and models to applications." *Global Ecology and Biogeography* 24 (3): 276–92. doi:[10.1111/geb.12268](https://doi.org/10.1111/geb.12268).
- Guthery, F. S. 1997. "A philosophy of habitat management for northern bobwhites." *Journal of Wildlife Management* 61 (2): 291–301. doi:[10.2307/3802584](https://doi.org/10.2307/3802584).
- Helzer, C. J., and D. E. Jelinski. 1999. "The relative importance of patch area and perimeter-area ratio to grassland breeding birds." *Ecological Applications* 9 (4): 1448–58. doi:[10.1890/1051-0761\(1999\)009\[1448:TR IOPA\]2.0.CO;2](https://doi.org/10.1890/1051-0761(1999)009[1448:TR IOPA]2.0.CO;2).
- Herkert, J. R. 1994. "The effects of habitat fragmentation on Midwestern grassland bird communities." *Ecological Applications* 4 (3): 461–71. doi:[10.2307/1941950](https://doi.org/10.2307/1941950).
- Herkert, J. R., S. A. Simpson, R. L. Westermeier, T. L. Esker, and J. W. Walk. 1999. "Response of northern harriers and short-eared owls to grassland management in Illinois." *Journal of Wildlife Management* 63 (2): 517–23. doi:[10.2307/3802637](https://doi.org/10.2307/3802637).
- Hertzog, L. R., A. Besnard, and P. Jay-Robert. 2014. "Field validation shows bias-corrected pseudo-absence selection is the best method for predictive species-distribution modelling." *Diversity and Distributions* 20 (12): 1403–13. doi:[10.1111/ddi.12249](https://doi.org/10.1111/ddi.12249).
- Hijmans, R. J., and C. H. Graham. 2006. "The ability of climate envelope models to predict the effect of climate change on species distributions." *Global Change Biology* 12 (12): 2272–81. doi:[10.1111/j.1365-2486.2006.01256.x](https://doi.org/10.1111/j.1365-2486.2006.01256.x).
- Johnson, D. H., and L. D. Igl. 2001. "Area requirements of grassland birds: A regional perspective." *Auk* 118 (1): 24–34. doi:[10.1642/0004-8038\(2001\)118\[0024:aogba\]2.0.co;2](https://doi.org/10.1642/0004-8038(2001)118[0024:aogba]2.0.co;2).
- Kobal, S. N., N. F. Payne, and D. R. Ludwig. 1999. "Habitat/area relationships, abundance, and composition of bird communities in 3 grassland types." *Transactions of the Illinois State Academy of Science* 92 (1–2): 109–31. <http://ilacadofsci.com/wp-content/uploads/2013/08/092-12MS9808-print.pdf>.
- Kuhn, M. 2008. "Building Predictive Models in R Using the caret Package." *Journal of Statistical Software* 28 (5): 1–26. doi:[10.18637/jss.v028.i05](https://doi.org/10.18637/jss.v028.i05).

- Landis, J. R., and G. G. Koch. 1977. "The measurement of observer agreement for categorical data." *Biometrics* 33 (1): 159–74. doi:[10.2307/2529310](https://doi.org/10.2307/2529310).
- Lawler, J. J., D. J. Lewis, E. J. Nelson, A. J. Plantinga, S. Polasky, J. C. Withey, D. P. Helmers, S. Martinuzzi, D. Pennington, and V. C. Radeloff. 2014. "Projected land-use change impacts on ecosystem services in the United States." *Proceedings of the National Academy of Sciences* 111 (20): 7492–7. doi:[10.1073/pnas.1405557111](https://doi.org/10.1073/pnas.1405557111).
- Matthews, Stephen N., Louis R. Iverson, Anantha M. Prasad, and Matthew P. Peters. 2011. "Changes in potential habitat of 147 North American breeding bird species in response to redistribution of trees and climate following predicted climate change." *Ecography* 34 (6): 933–45. doi:[10.1111/j.1600-0587.2011.06803.x](https://doi.org/10.1111/j.1600-0587.2011.06803.x).
- McGuire, B., and S. Rupp. 2013. *Perennial herbaceous biomass production and harvest in the prairie pothole region of the Northern Great Plains: Best management guidelines to achieve sustainability of wildlife resources*. Washington, DC: National Wildlife Federation. <http://www.nwf.org/~media/PDFs/Wildlife/BiomassBMGPPR.pdf>.
- Meehan, T. D., A. H. Hurlbert, and C. Gratton. 2010. "Bird communities in future bioenergy landscapes of the Upper Midwest." *Proceedings of the National Academy of Sciences of the United States of America* 107 (43): 18533–8. doi:[10.1073/pnas.1008475107](https://doi.org/10.1073/pnas.1008475107).
- Meehan, T. D., B. P. Werling, D. A. Landis, and C. Gratton. 2012. "Pest-Suppression Potential of Midwestern Landscapes under Contrasting Bioenergy Scenarios." *Plos One* 7 (7). doi:[10.1371/journal.pone.0041728](https://doi.org/10.1371/journal.pone.0041728).
- Pe'er, G., M. A. Tsianou, K. W. Franz, Y. G. Matsinos, A. D. Mazaris, D. Storch, L. Kopsova, J. Verboom, M. Baguette, V. M. Stevens, and K. Henle. 2014. "Toward better application of minimum area requirements in conservation planning." *Biological Conservation* 170: 92–102. doi:[10.1016/j.biocon.2013.12.011](https://doi.org/10.1016/j.biocon.2013.12.011).
- Phillips, S. J., M. Dudik, J. Elith, C. H. Graham, A. Lehmann, J. R. Leathwick, and S. Ferrier. 2009. "Sample selection bias and presence-only distribution models: implications for background and pseudo-absence data." *Ecological Applications* 19 (1): 181–97. doi:[10.1890/07-2153.1](https://doi.org/10.1890/07-2153.1).
- Rashford, B. S., J. A. Walker, and C. T. Bastian. 2011. "Economics of Grassland Conversion to Cropland in the Prairie Pothole Region." *Conservation Biology* 25 (2): 276–84. doi:[10.1111/j.1523-1739.2010.01618.x](https://doi.org/10.1111/j.1523-1739.2010.01618.x).
- Ridley, C. E., H. I. Jager, R. A. Efroymsen, C. Kwit, D. A. Landis, Z. H. Leggett, D. A. Miller, and C. M. Clark. 2013. "Debate: Can bioenergy be produced in a sustainable manner that protects biodiversity and avoids the risk of invaders?" *Ecological Society of America Bulletin* 94 (3): 277–90. doi:[10.1890/0012-9623-94.3.277](https://doi.org/10.1890/0012-9623-94.3.277).
- Riffell, S., J. Verschuyt, D. Miller, and T. B. Wigley. 2011. "Biofuel harvests, coarse woody debris, and biodiversity – A meta-analysis." *Forest Ecology and Management* 261 (4): 878–87. doi:[10.1016/j.foreco.2010.12.021](https://doi.org/10.1016/j.foreco.2010.12.021).
- Robbins, C. S., D. K. Dawson, and B. A. Dowell. 1989. "Habitat area requirements of breeding forest birds of the Middle Atlantic states." *Wildlife Monographs* (103): 1–34. <http://www.jstor.org/stable/383069>.
- Robertson, B. A., R. A. Rice, T. S. Sillett, C. A. Ribic, B. A. Babcock, D. A. Landis, J. R. Herkert, R. J. Fletcher, J. J. Fontaine, P. J. Doran, and D. W. Schemske. 2012. "Are Agrofuels a Conservation Threat or Opportunity for Grassland Birds in the United States?" *The Condor* 114 (4): 679–88. doi:[10.1525/cond.2012.110136](https://doi.org/10.1525/cond.2012.110136).

- Rondinini, C., K. A. Wilson, L. Boitani, H. Grantham, and H. P. Possingham. 2006. "Tradeoffs of different types of species occurrence data for use in systematic conservation planning." *Ecology Letters* 9 (10): 1136–45. doi:[10.1111/j.1461-0248.2006.00970.x](https://doi.org/10.1111/j.1461-0248.2006.00970.x).
- Roth, A. M., D. W. Sample, C. A. Ribic, L. Paine, D. J. Undersander, and G. A. Bartelt. 2005. "Grassland bird response to harvesting switchgrass as a biomass energy crop." *Biomass & Bioenergy* 28 (5): 490–8. doi:[10.1016/j.biombioe.2004.11.001](https://doi.org/10.1016/j.biombioe.2004.11.001).
- Royle, J. A., and J. D. Nichols. 2003. "Estimating abundance from repeated presence-absence data or point counts." *Ecology* 84 (3): 777–90. doi:[10.1890/0012-9658\(2003\)084\[0777:eafrpa\]2.0.co;2](https://doi.org/10.1890/0012-9658(2003)084[0777:eafrpa]2.0.co;2).
- Samson, F. B., F. L. Knopf, and W. R. Ostlie. 2004. "Great Plains ecosystems: past, present, and future." *Wildlife Society Bulletin* 32 (1): 6–15. doi:[10.2193/0091-7648\(2004\)32\[6:gpeppa\]2.0.co;2](https://doi.org/10.2193/0091-7648(2004)32[6:gpeppa]2.0.co;2).
- Stoms, D. M., F. W. Davis, M. W. Jenner, T. M. Nogueira, and S. R. Kaffka. 2012. "Modeling wildlife and other trade-offs with biofuel crop production." *Global Change Biology Bioenergy* 4 (3): 330–41. doi:[10.1111/j.1757-1707.2011.01130.x](https://doi.org/10.1111/j.1757-1707.2011.01130.x).
- Tavernia, B. G., M. D. Nelson, M. E. Goerndt, B. F. Walters, and C. Toney. 2013. "Changes in forest habitat classes under alternative climate and land-use change scenarios in the northeast and midwest, USA." *Mathematical and Computational Forestry and Natural-Resource Sciences* 5 (2): 135–50. http://www.fs.fed.us/nrs/pubs/jrnl/2013/nrs_2013_Tavernia_002.pdf?
- Terhune, T. M., D. C. Sisson, W. E. Palmer, B. C. Faircloth, H. L. Stribling, and J. P. Carroll. 2010. "Translocation to a fragmented landscape: survival, movement, and site fidelity of Northern Bobwhites." *Ecological Applications* 20 (4): 1040–52. doi:[10.1890/09-1106.1](https://doi.org/10.1890/09-1106.1).
- Tirpak, J. M., D. T. Jones-Farrand, III F. R. Thompson, D. J. Twedt, and W.B. Uihlein III. 2008. *Multiscale habitat suitability index models for priority landbirds in the Central Hardwoods and West Gulf Coastal Plain / Ouachitas bird conservation regions*. Delaware, OH: U.S. Department of Agriculture, Forest Service, Northern Research Station. http://www.nrs.fs.fed.us/pubs/gtr/gtr_nrs49.pdf?
- USDA. 1999. *Northern Bobwhite (Colinus virginianus)*. Madison, MS: U.S. Department of Agriculture, Wildlife Habitat Management Institute, Natural Resources Conservation Service. <http://www.chenangoswcd.org/chenango/linked/bobwhite.pdf>.
- USDA. 2014. *Common Land Unit Database*. Washington, D.C.: US Department of Agriculture, Farm Service Agency, pp.
- USFWS (U.S. Fish and Wildlife Service). 2008. *Birds of Conservation Concern 2008*. Arlington, Virginia: U. S. Department of the Interior, Fish and Wildlife Service, Division of Migratory Bird Management. <https://www.fws.gov/migratorybirds/pdf/grants/BirdsofConservationConcern2008.pdf>.
- USGS. 2013. *Biodiversity Information Serving Our Nation Database*. Washington, DC.: US Geological Survey, pp. <https://bison.usgs.gov/#home>
- Vance, M. D., L. Fahrig, and C. H. Flather. 2002. "Relationship between minimum habitat requirements and annual reproductive rates in forest breeding birds." *Ecological Society of America Annual Meeting Abstracts* 87: 288–9.

- Vandever, M. W., and A. W. Allen. 2015. *Management of Conservation Reserve Program Grasslands to Meet Wildlife Habitat Objectives*. Reston, VA: U.S. Department of the Interior, U.S. Geological Survey. <https://pubs.usgs.gov/sir/2015/5070/pdf/sir2015-5070.pdf>.
- Vickery, P. D., M. L. Hunter, and S. M. Melvin. 1994. "Effects of habitat area on the distribution of grassland birds in Maine." *Conservation Biology* 8 (4): 1087–97. doi:[10.1046/j.1523-1739.1994.08041087.x](https://doi.org/10.1046/j.1523-1739.1994.08041087.x).
- Vickery, P. D., P. L. Tubaro, J. M. C. da Silva, B. G. Peterjohn, J. R. Herkert, and R. B. Cavalcanti. 1999. "Conservation of grassland birds in the Western Hemisphere." In *Ecology and Conservation of Grassland Birds of the Western Hemisphere*, edited by P. D. Vickery and J. R. Herkert. Lawrence, KS: Cooper Ornithological Society. https://sora.unm.edu/sites/default/files/journals/sab/sab_019.pdf.
- Werling, B. P., T. D. Meehan, C. Gratton, and D. A. Landis. 2011. "Influence of habitat and landscape perennality on insect natural enemies in three candidate biofuel crops." *Biological Control* 59 (2): 304–12. doi:[10.1016/j.biocontrol.2011.06.014](https://doi.org/10.1016/j.biocontrol.2011.06.014).
- Withey, J. C., J. J. Lawler, S. Polasky, A. J. Plantinga, E. J. Nelson, P. Kareiva, C. B. Wilsey, C. A. Schloss, T. M. Nogeire, A. Ruesch, J. Ramos, and W. Reid. 2012. "Maximising return on conservation investment in the conterminous USA." *Ecology Letters* 15: 1249–56. doi:[10.1111/j.1461-0248.2012.01847.x](https://doi.org/10.1111/j.1461-0248.2012.01847.x).

Appendix 10-A

Table 10A.1. | Bird species included in our analysis. References for minimum area requirements of forest, shrubland, or generalist birds include: Galli, Leck, and Forman 1976; Robbins, Dawson, and Dowell 1989; Pe'er et al. 2014; Vance, Fahrig, and Flather 2002; and Tirpak et al. 2008. References for minimum area requirements of grassland birds include: Herkert 1994; Herkert et al. 1999; Helzer and Jelinski 1999; Kobal, Payne, and Ludwig 1999; Johnson and Igl 2001; Terhune et al. 2010; USDA 1999; and Vickery, Hunter, and Melvin 1994. We defined minimum area as the area associated with a 50% probability of occupancy.

Common name	Scientific name	Primary habitat	Minimum area required (km ²)	Species considered to prefer patch edges or patch interiors	Neotropical/ North American/ Resident	Reference ecosystems			
						Forest	Corn	Prairie	Small grain
Bobolink	<i>Dolichonyx oryzivorus</i>	Mixed grassland, obligate	46	Interior	North American	•	•	•	•
Dickcissel	<i>Spiza Americana</i>	Mid-tallgrass	0.54	Interior	Neotropical	•	•	•	•
Eastern kingbird	<i>Tyrannus tyrannus</i>	Open savannah	0	Interior ground-nesting	Neotropical	•	•	•	•
Eastern meadowlark	<i>Sturnella magna</i>	Grassland obligate	5	Edge	Neotropical	•	•	•	•
Field sparrow	<i>Spizella pusilla</i>	Generalist	2	Generalist	Neotropical	•	•	•	•
Grasshopper sparrow	<i>Ammodramus savannarum</i>	Shortgrass, obligate	10	Interior	North American	•	•	•	•
Henslow's sparrow	<i>Ammodramus henslowii</i>	Tallgrass, obligate	12.4	Early succession, ground nester	Neotropical	•	•	•	•
Northern bobwhite	<i>Colinus virginianus</i>	Midgrass	16	Early succession	Neotropical	•	•	•	•
Northern harrier	<i>Circus cyaneus</i>	Grassland	15	Open	North American	•	•	•	•
Ring-necked pheasant	<i>Phasianus colchicus</i>	Tallgrass	5.5*	Edge	Resident	•	•	•	•
Savannah sparrow	<i>Passerculus sandwichensis</i>	Grassland, obligate; open fields	10	Interior	North American	•	•	•	•
Upland sandpiper	<i>Bartramia longicauda</i>	Shortgrass	56	Interior	Neotropical	•	•	•	•

*Considered area-independent, as are species with zero values listed.

Common name	Scientific name	Primary habitat	Minimum area required (km²)	Species considered to prefer patch edges or patch interiors	Neotropical/ North American/ Resident	Reference ecosystems			
						Forest	Corn	Prairie	Small grain
Acadian flycatcher	<i>Empidonax vireescens</i>	Forest	15	Interior	Neotropical	•			
American goldfinch	<i>Spinus tristis</i>	Grassland, open/riparian woodland	0	Edge	North American migrant	•			
American robin	<i>Turdus migratorius</i>	Generalist, woodland/farmland	0.2*	Open, generalist	North American migrant	•			
Blue jay	<i>Cyanocitta cristata</i>	Forest	0.8	Open, generalist	Resident/ North American migrant	•			
Blue-gray gnatcatcher	<i>Poliophtila caerulea</i>	Forest	15	Interior	Neotropical	•			
Brown thrasher	<i>Toxostoma rufum</i>	Forest	0*	Early successional	Resident	•			
Carolina chickadee	<i>Poecile carolinensis</i>	Forest	0*	(cavity nester)	Resident	•			
Carolina wren	<i>Thryothorus ludovicianus</i>	Forest	2*	Generalist	Resident	•			
Common grackle	<i>Quiscalus quiscula</i>	Forest	0.2*	Edge	Neotropical	•			
Downy woodpecker	<i>Picoides pubescens</i>	Forest	1.2	Generalist, (cavity nester)	Resident	•			
Eastern towhee	<i>Pipilo erythrophthalmus</i>	Forest	3*	Generalist/ early successional forest	Resident	•			
Eastern tufted titmouse	<i>Baeolophus bicolor</i>	Deciduous forest	2	Edge/forest-shrubland	Neotropical	•			
Great-crested flycatcher	<i>Myiarchus crinitus</i>	Forest	0.3*	Interior (cavity nester)	Neotropical	•			
Hairy woodpecker	<i>Picoides villosus</i>	Forest	24	Interior (cavity nester)	Resident	•			
Hooded warbler	<i>Setophaga citrina</i>	Forest	20	Interior, but uses gaps, understory	Neotropical	•			
Indigo bunting	<i>Passerina cyanea</i>	Forest	10*	Generalist, edge, shrubs	Neotropical	•			

*Considered area-independent, as are species with zero values listed.

Common name	Scientific name	Primary habitat	Minimum area required (km ²)	Species considered to prefer patch edges or patch interiors	Neotropical/ North American/ Resident	Reference ecosystems			
						Forest	Corn	Prairie	Small grain
Kentucky warbler	<i>Geothlypis formosa</i>	Forest	17	Interior	Neotropical	•			
Northern cardinal	<i>Cardinalis cardinalis</i>	Forest	24	Interior	Neotropical	•			
Northern parula	<i>Setophaga americana</i>	Forest	520	Woodland, shrubland	Resident	•			
Orchard oriole	<i>Icterus spurius</i>	Deciduous forest	0	Open forest, edge	Resident	•			
Pileated woodpecker	<i>Dryocopus pileatus</i>	Forest	165	Interior, (cavity nester), forages in low foliage	Neotropical	•			
Prothonotary warbler	<i>Protonotaria citrea</i>	Forest	30	Interior, (cavity nester)	Resident	•			
Red-bellied woodpecker	<i>Melanerpes carolinus</i>	Forest	75	Interior, (cavity nester)	Neotropical	•			
Red-eyed vireo	<i>Vireo olivaceus</i>	Forest	2.5	Interior	Resident	•			
Red-headed woodpecker	<i>Melanerpes erythrocephalus</i>	Forest	0	Generalist	Neotropical	•			
Ruby-throated hummingbird	<i>Archilochus colubris</i>	Forest, coniferous	0	Generalist	Neotropical	•			
Summer tanager	<i>Piranga rubra</i>	Forest, deciduous and mixed	40	Streams	Neotropical	•			
Warbling vireo	<i>Vireo gilvus</i>	Forest, deciduous and mixed	0	Shrubby understory in gaps	Neotropical	•			
White-eyed vireo	<i>Vireo griseus</i>	Forest, deciduous	5.9	Generalist, shrub, pasture, (ground nester)	North American	•			
White-throated sparrow	<i>Zonotrichia albicollis</i>	Forest	0	Generalist, (ground nester)	Neotropical	•			

*Considered area-independent, as are species with zero values listed.

Common name	Scientific name	Primary habitat	Minimum area required (km²)	Species considered to prefer patch edges or patch interiors	Neotropical/ North American/ Resident	Reference ecosystems			
						Forest	Corn	Prairie	Small grain
Wood thrush	<i>Hylocichla mustelina</i>	Forest	1	Interior	Neotropical	•			
Yellow-billed cuckoo	<i>Coccyzus americanus</i>	Forest generalist	24	Shrubs, cup nester	Neotropical	•			
Yellow-breasted chat	<i>Icteria virens</i>	Forest, coniferous, shrubland	0 (forest), 2.3 (shrubland)	Shrubs, cup nester	Neotropical	•			
Yellow-rumped warbler	<i>Setophaga coronata</i>	Generalist, coniferous forest	0	Edge	North American	•			
Brown-headed cowbird	<i>Molothrus ater</i>	Grassland	0	Edge	Neotropical		•	•	•
Common yellowthroat	<i>Geothlypis trichas</i>	Forest	0	Early succession	Neotropical		•	•	•
Eastern bluebird	<i>Sialia sialis</i>	Forest edge	0	Edge	Neotropical		•	•	•
Mourning dove	<i>Zenaida macroura</i>	Open woodland, grassland	4	Edge	Resident/ North American		•	•	•
Red-winged blackbird	<i>Agelaius phoeniceus</i>	Grassland, wetland	24	Generalist	Resident		•	•	•
Song sparrow	<i>Melospiza melodia</i>	Early succession	24*	Edge	North American		•	•	•

*Considered area-independent, as are species with zero values listed.

This page was intentionally left blank.